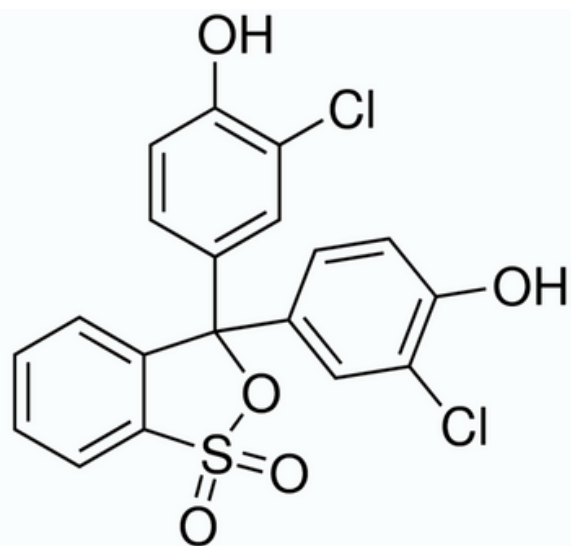


## CHLOROPHENOL RED



C.A.S. No.	4430-20-0
Molecular Weight	423.28 g/mole
Solubility 0.1% ( 95% Ethanol)	Clear solution
Transition range	pH 4.8 - 6.4
	Brownish yellow - Red violet
Absorption maximum(in 0.1N NaOH)	573 - 579 nm
Absorptivity A1%1cm, (in 0.1N NaOH)	>1550
Dye content (by Spectrophotometry)	> 93%
Loss On Drying at 110 degrees C (1hr)	< 8 %