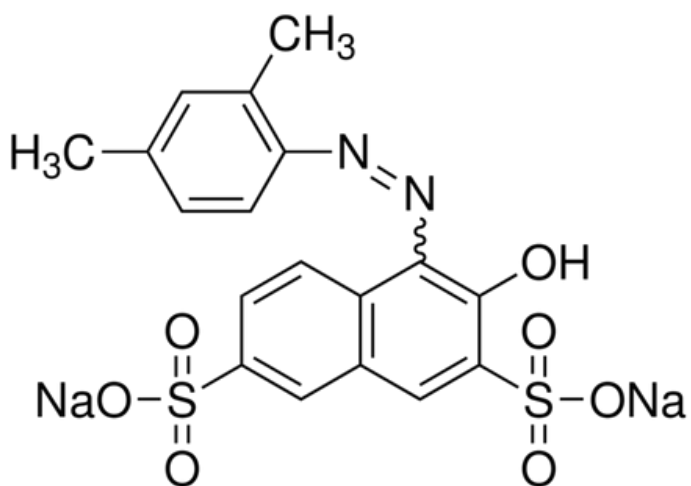


XYLIDINE PONCEAU 2R



C.A.S. No.	3761-53-3
C.I. No.	16150
Molecular Weight	480.43 g/mole
Solubility 0.1%(in Water)	Clear red solution
Absorption maximum (Water)	503 - 508nm
Absorptivity 1%/ 1cm,(Water)	> 420
Dye content (Spectrophotometry)	> 70%
Loss On Drying at 110 degrees C (1hr)	< 5%