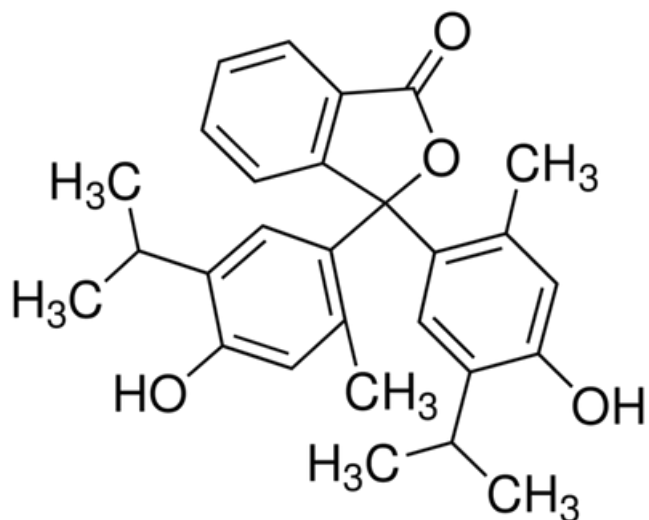


THYMOLPHTHALEIN



| | |
|---------------------------------------|-------------------|
| C.A.S. No. | 125-20-2 |
| Molecular Weight | 430.54 g/mole |
| Solubility 0.1% (Ethanol) | Clear solution |
| Transition color | pH 9.3 - pH 10.5 |
| | Colourless - Blue |
| Absorption maximum (in 0.1N NaOH) | 593 - 597nm |
| Molar Absorbancy at 593.8 nm | > 38000 |
| Absorptivity (A1%/1cm, (in 0.1N NaOH) | > 885 |
| Dye content (Spectrophotometry) | > 95 % |
| Loss On Drying at 110 degrees C (1hr) | < 1% |
| Transition Range according to ACS | Passes Test |