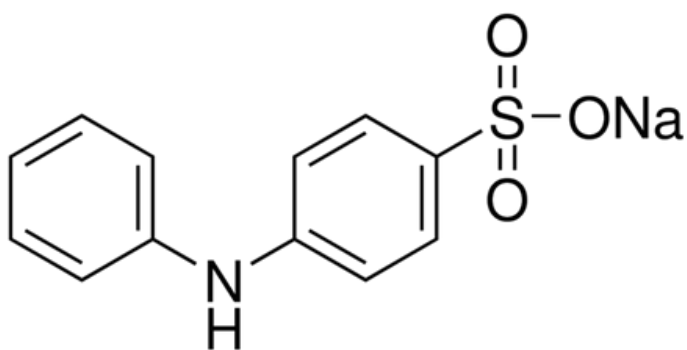


## SODIUM DIPHENYLAMINE SULFONATE



C.A.S. No.	6152-67-6
Molecular Weight	271.27g/mole
Solubility 0.1% (Dist. Water)	Clear solution
Absorption maximum (Dist.Water)	290 - 295nm
Absorptivity (1%/1cm, in Dist. Water)	700 - 800
Sulfated ash	20 - 28.5%
Loss On Drying at 110 degrees C (1hr)	< 10%

