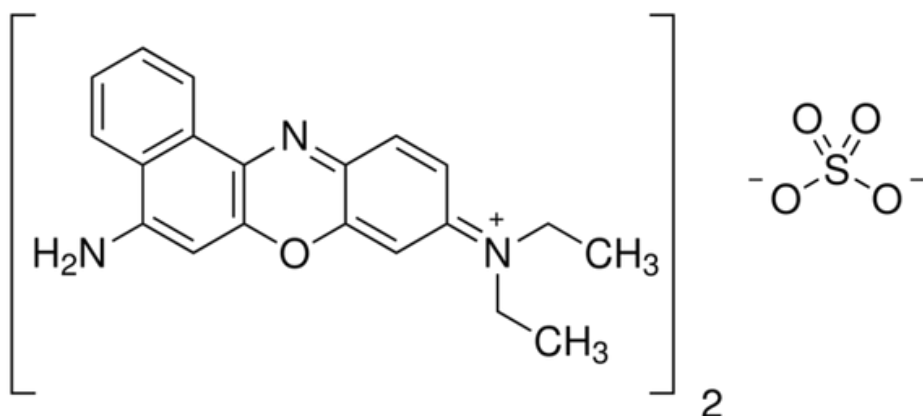


## NILE BLUE SULFATE



C.A.S. No.	3625-57-8
C.I. No.	51180
Molecular Weight	732.84 g/mole
Solubility 0.1% (50%Ethanol)	Clear blue solution
Absorption maximum (50% Ethanol)	635 - 639 nm
Absorptivity 1%/1cm (50% Ethanol)	>1630
Dye content (by Spectrophotometry)	>90%
Loss On Drying at 110 degrees C (1hr)	<8%

