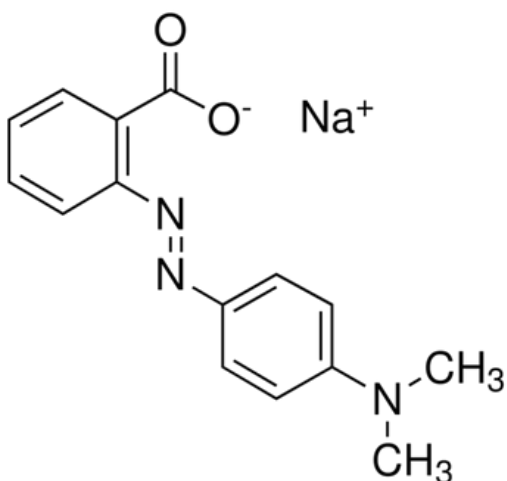


METHYL RED SODIUM SALT



C.A.S. No.	845-10-3
C.I. No.	13020
Molecular Weight	291.28 g/mol
Solubility 0.1% (dist. water)	Only faint trace of turbidity or insoluble matter
Transition range	pH 4.2 - 6.2
	Violet Red - Brownish Yellow
Absorption maximum (in Dist. Water)	430 - 440nm
Absorptivity (A1%/1cm,in Dist Water)	>585
Dye content (by Spectrophotometry)	>95%
Loss On Drying at 110 degrees C (1hr)	< 5%
Transition range according to ACS	To passes test