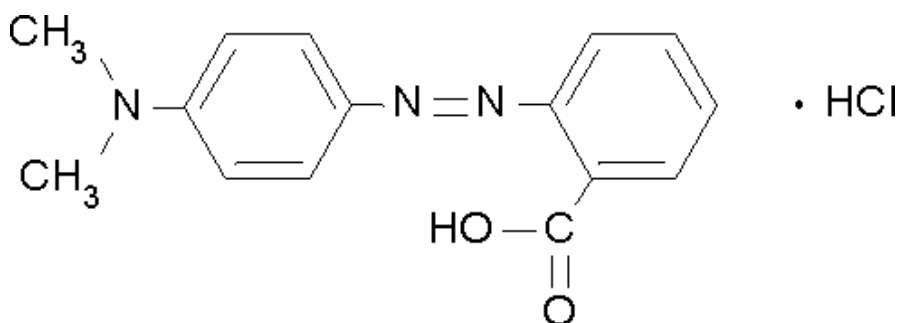


METHYL RED HYDROCHLORIDE



C.A.S. No.	63451-28-5
Molecular Weight	305.77 g/mole
Solubility 0.1% (Ethanol)	Clear solution
Transition range	pH 4.2 - 6.2
	Pink - Yellow
Absorption maximum (pH 4.2)	523 - 528nm
Absorptivity (1%/1cm at pH 4.2)	>1100
Absorption maximum (pH 6.2)	430 - 434nm
Absorptivity (1%/1cm at pH 6.2)	>620
Loss On Drying at 110 degrees C (1hr)	<10%
Transition range according to ACS	Passes test

