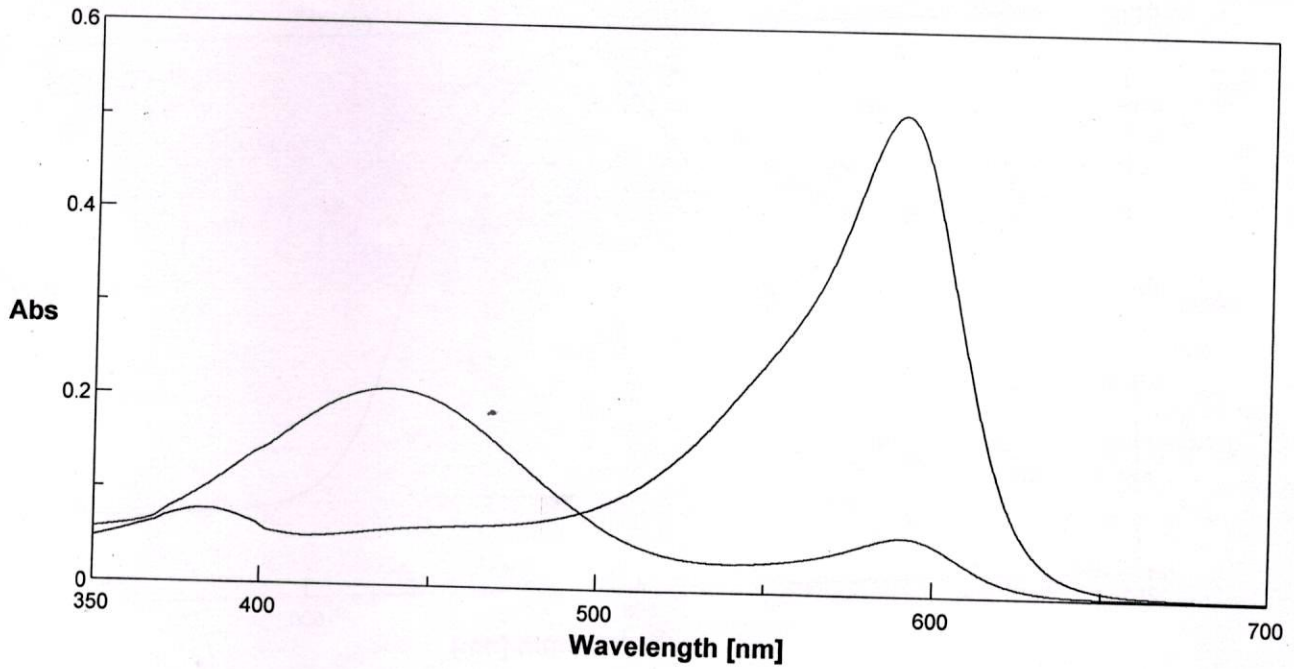


Product Name :-BROMOCHLOROPHENOL BLUE , c = 10mg/Lt
 Analyst :- U S Matre
 Department :- Analytical
 Organisation :- ESJAY CHEMICALS



CERTIFICATE OF ANALYSIS

PRODUCT : BROMOCHLOROPHENOL BLUE
 CAS NO. : 2553-71-1

TYPICALCOA

<u>Tests</u>	<u>Results</u>	<u>Specification</u>
1. Appearance	- Light pink to dark pink powder	(Passes test)
2. Solubility 0.1% (in Ethanol)	- Clear solution	(Passes test)
3. Transition range	- pH 3.0 - pH 4.6 Greenish yellow- Blue violet	(Passes test)
4. Absorptivity 1%/ 1cm, (pH 3.0) at λ max.437.6nm	- 418	(400-450)
(pH 4.6) at λ max.590.4 nm	- 1022	(1000-1060)
5. Loss On Drying at 110°C(1hr)	- 2.16%	(< 3%)

Mfg.Date : JULY - 2023
 Exp.Date : JUNE - 2029

ESJAY Chemicals

U S Matre
 Analytical Dept

09/07/23