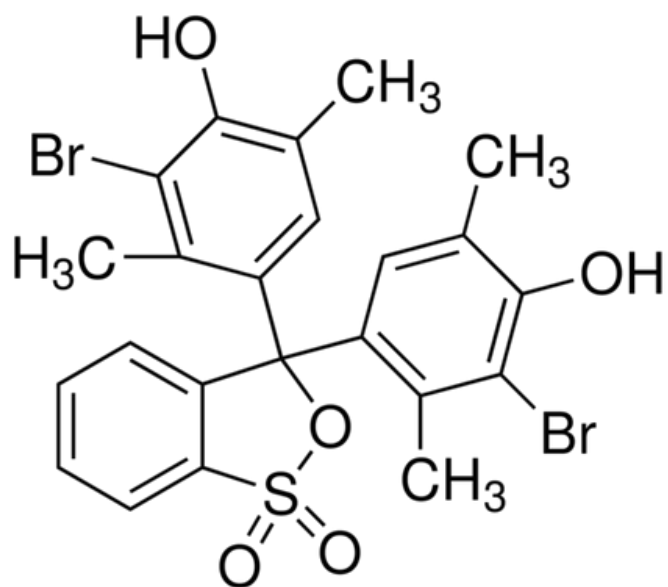


BROMOXYLENOL BLUE



C.A.S. No.	40070-59-5
Molecular Weight	568.29 g/mole
Solubility 0.1% (Ethanol)	Clear Solution
Transition Range	pH 5.7 - 7.4
	Yellow - Blue
Absorption maximum (pH 5.7)	432 - 437 nm
Absorptivity (1%/1 cm at pH 5.7)	> 300
Absorption maximum (pH 7.4)	613 - 615 nm
Absorptivity (1%/1 cm at pH 7.4)	> 500
Loss On Drying at 110 degrees C (1hr)	< 3%