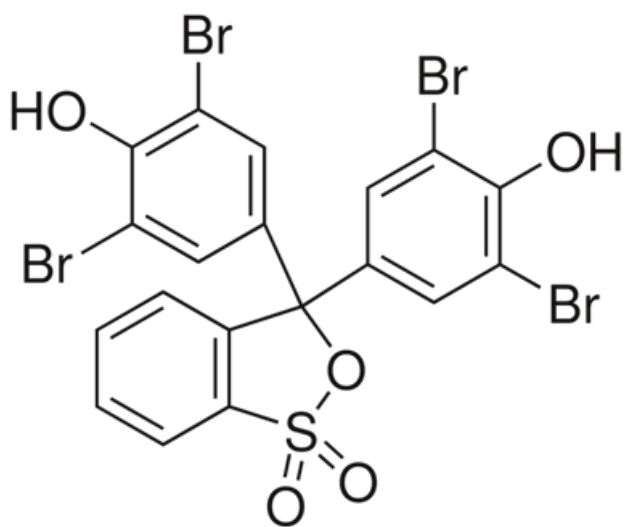


BROMOPHENOL BLUE



C.A.S. No.	115-39-9
Molecular Weight	669.99g/mole
Solubility 0.1% (Ethanol)	Clear solution
Transition Range	pH 3.1 - pH 4.6
	Greenish yellow-Blue violet
Absorption maximum (pH 3.1)	434 - 439nm
Absorptivity (1%/ 1cm at pH 3.1)	350 - 385
Absorption maximum (pH 4.6)	590 - 593nm
Absorptivity (1%/ 1cm at pH 4.6)	940 - 1000
Dye content (by Spectrophotometry)	> 95%
Loss On Drying at 110 degrees C (1hr)	<1%