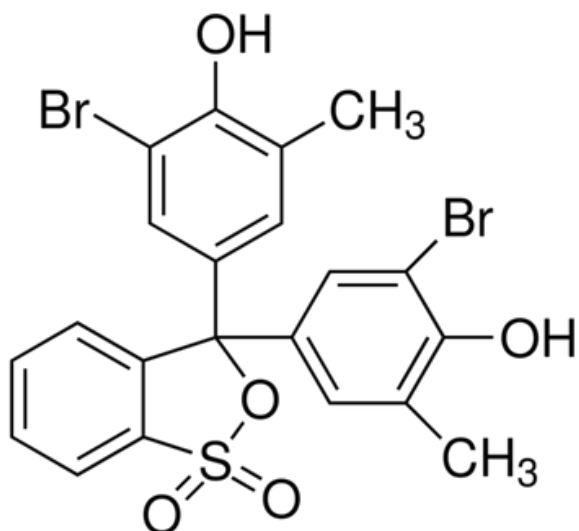


## BROMOCRESOL PURPLE



C.A.S. No.	115-40-2
Molecular Weight	540.24 g/mole
Solubility 0.1% (Ethanol)	Clear solution
Transition range	pH 5.2 - 6.8
	Greenish Yellow - Bluish Violet
Absorption maximum (pH 5.2)	429 - 433nm
Absorptivity (1%/ 1cm at pH 5.2)	400 - 450
Absorption maximum (pH 6.8)	587 - 590nm
Absorptivity (1%/ 1cm at pH 6.8)	1000 - 1100
Dye content (by Spectrophotometry)	> 95%
Loss On Drying at 110 degrees C (1hr)	< 1%