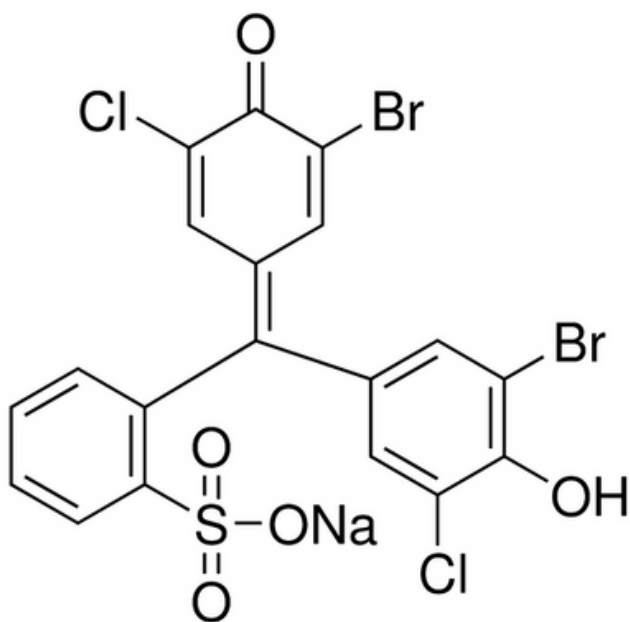


BROMOCHLOROPHENOL BLUE SODIUM SALT



C.A.S. No.	102185-52-4
Solubility 0.1% (Dist. Water)	Clear solution
Transition range	pH 3.0-pH 4.6
	Brownish Yellow-Blue Violet
Absorption maximum (pH 3.0)	433 - 437nm
Absorptivity (1%/ 1cm at (pH 3.0)	370 - 400
Absorption maximum (pH 4.6)	589 - 592nm
Absorptivity (1%/ 1cm at (pH 4.6)	900 -1000
Dye content (by Spectrophotometry)	> 95%
Loss On Drying at 110 degrees C (1hr)	< 5%

